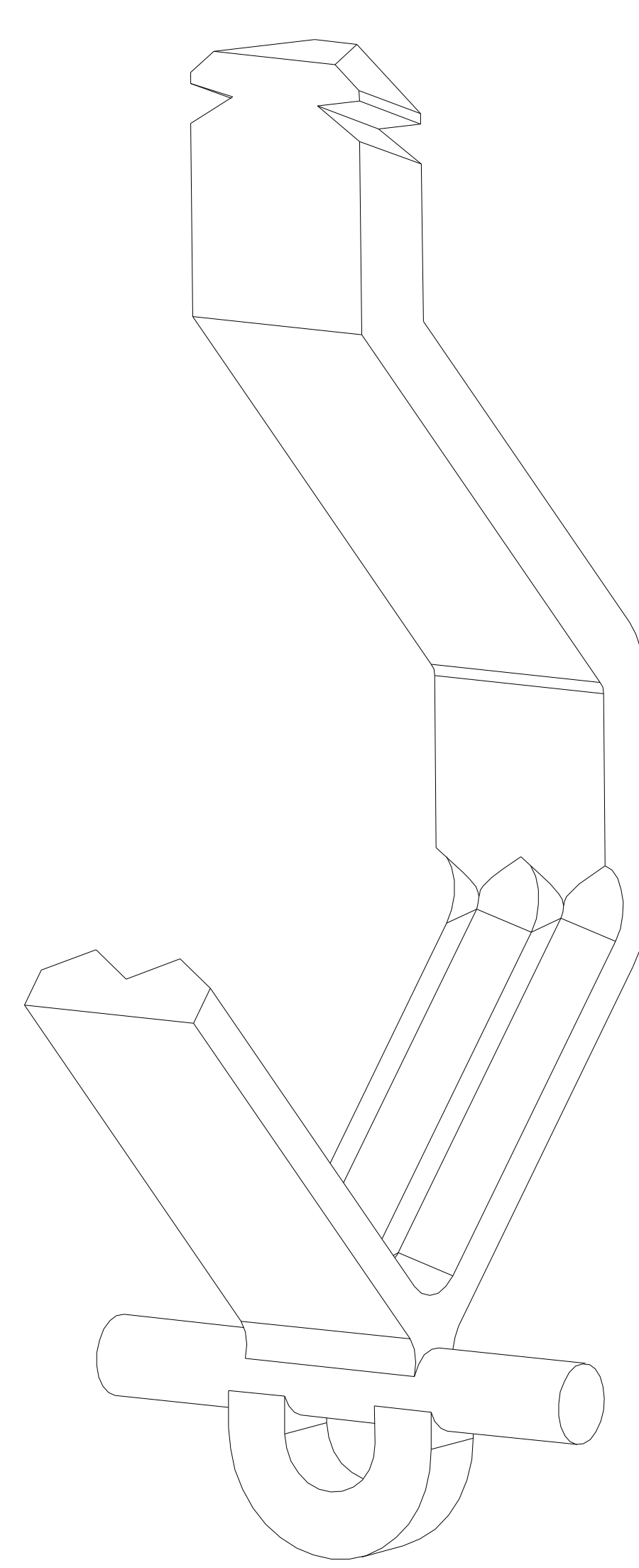
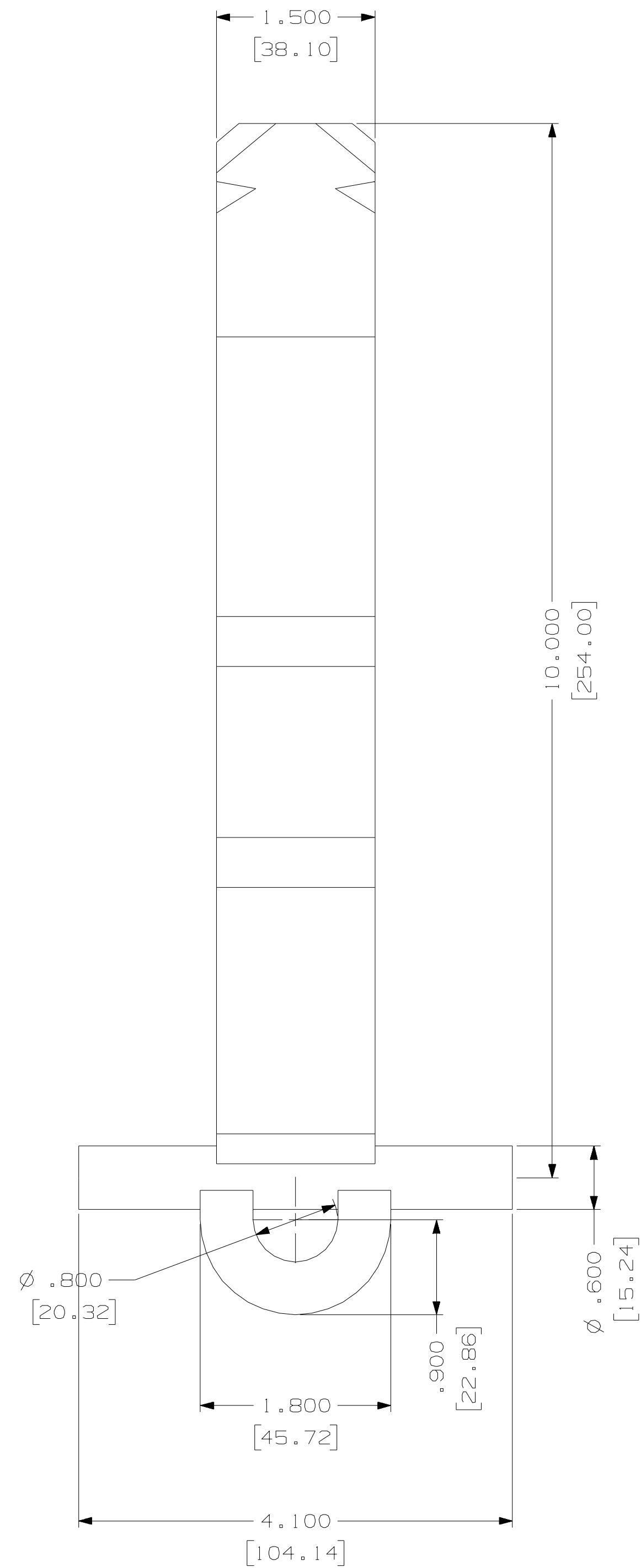
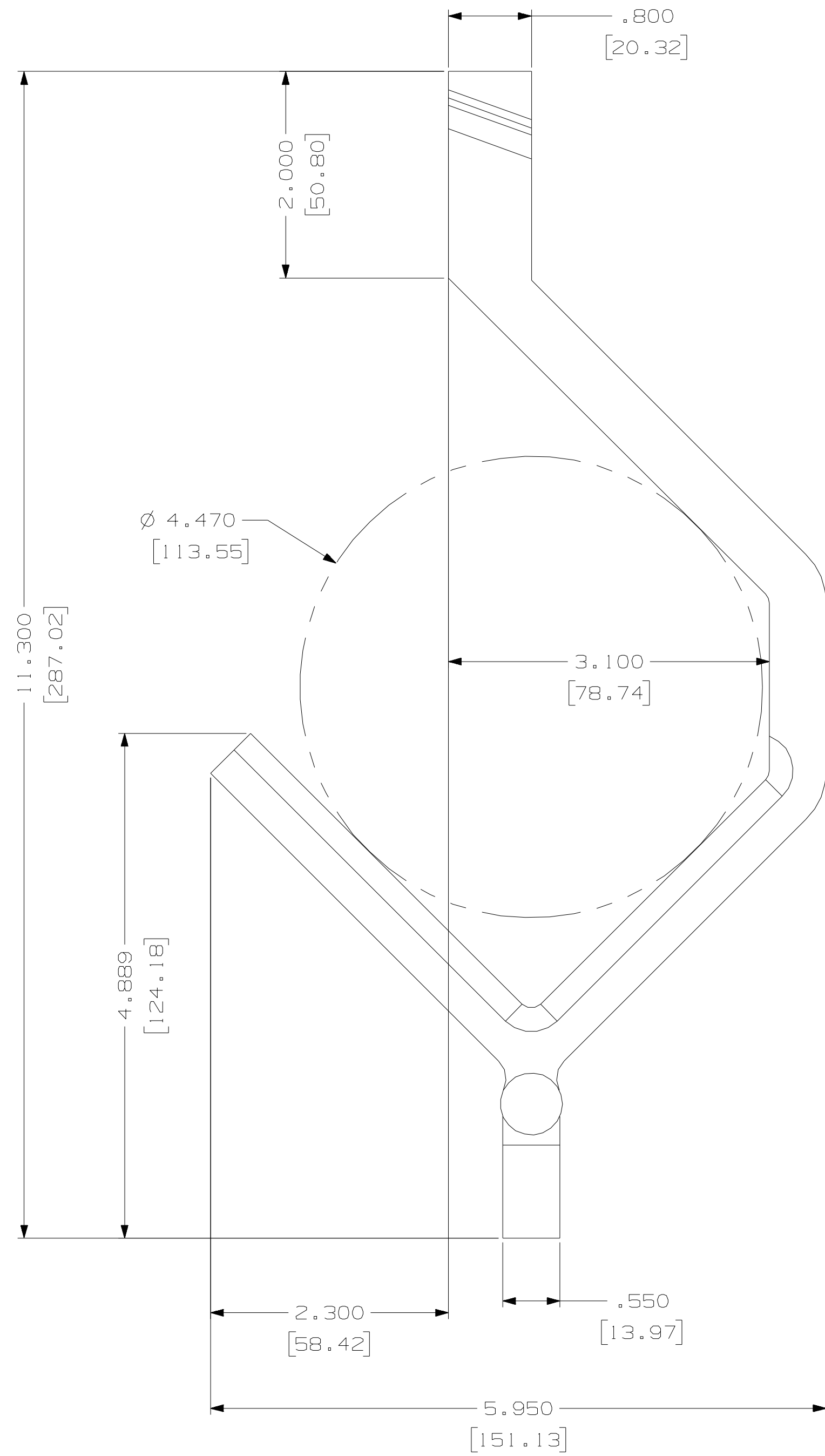
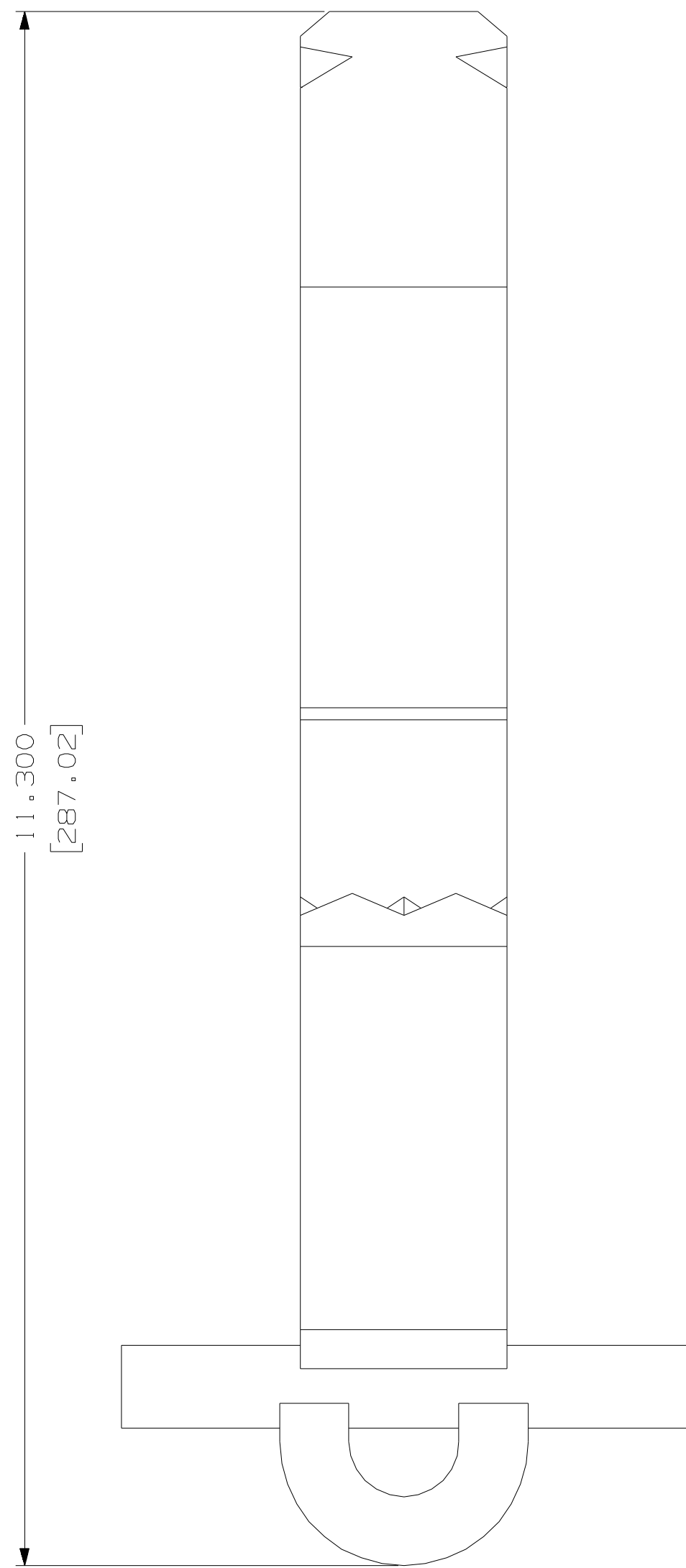
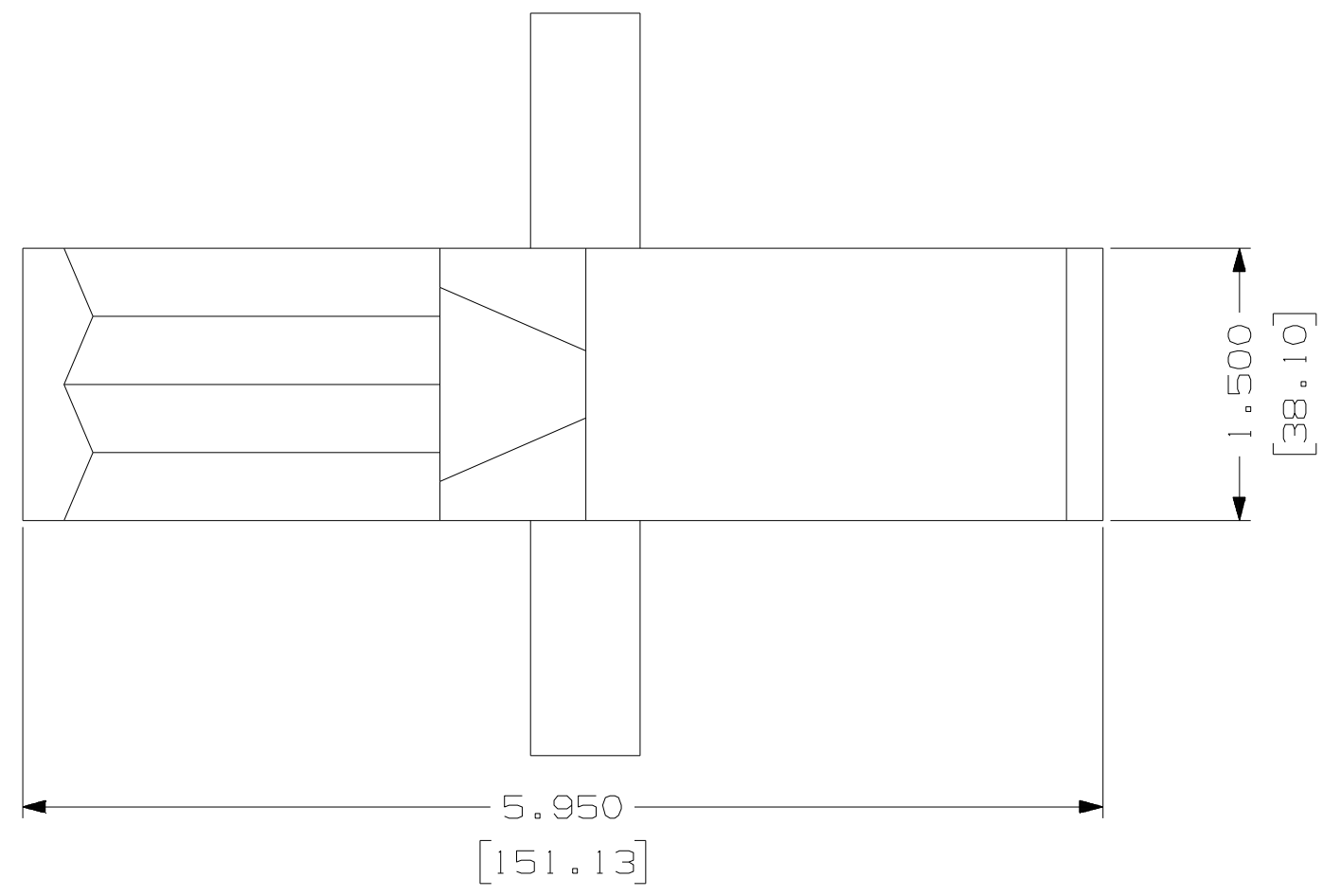
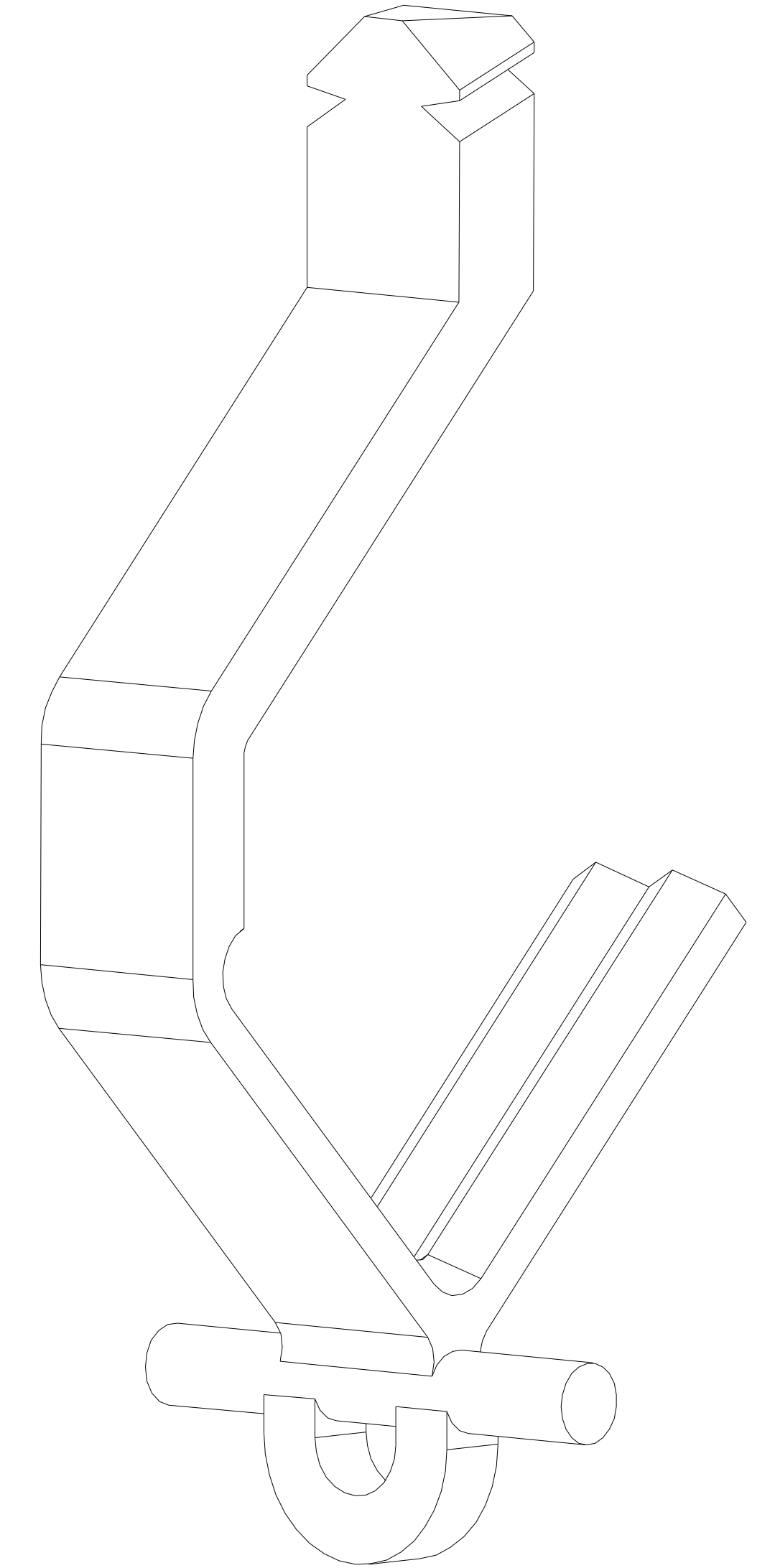


Max Buss Bar Size
4.0" Square
4.0" Dia. Round



ISO VIEW



ISO VIEW

POS	DESCRIPTION	QTY	MATERIAL	SIZE	HARDNESS
X	CHROME ANODE HOOK #10 XXX			1.500" X 5.950" X 11.300"	
<p>CONFIDENTIAL This document contains confidential information which is property of ALCHEMY EXTRUSIONS Inc. This document may not be reproduced, transferred or used, or its content disclosed without the written permission of ALCHEMY EXTRUSIONS Inc.</p> <p>TOLERANCES UNLESS OTHERWISE SPECIFIED x/xx = ± .015 .xx = ± .010 .xxx = ± .005 .xxx = ± .001 ANGLES = ± 1/2°</p>					
<p>DESIGNED RP 05-09 DRAWN RP 05-09 APPROV.</p>			<p>23 Chopple Street Hamilton, Ontario L8L 6K7 Tel: 905-278-7811 Fax: 905-385-2641</p>		
<p>TITLE: CHROME ANODE HOOKS DOUBLE KNIFE EDGE</p>					
<p>SCALE: 1:1</p>		<p>JOB: EP0708</p>		<p>DWG NO. EP0708-7 SHEET 1 OF 1</p>	

ALCHEMY
EXTRUSIONS INC.